

Special reduced course fee available for University students, faculty and staff!



Extended Studies at the University of Nevada, Reno presents

Business Technology Series:

Statistical Analysis Software (SAS) Courses

Hands-on training in user-friendly SAS macro-applications

Intended for business analysts, predictive modelers, statistical consultants, bio-statisticians, economists and social scientists in advanced training in data exploration and graphical data analysis methods, Business Technology Series Statistical Analysis Software Courses are designed to help increase effectiveness, efficiency and productivity in research and development. Courses may be taken independently and require no formal admission to the University.

NEW! Exploratory Graphical Analysis and Predictive Modeling

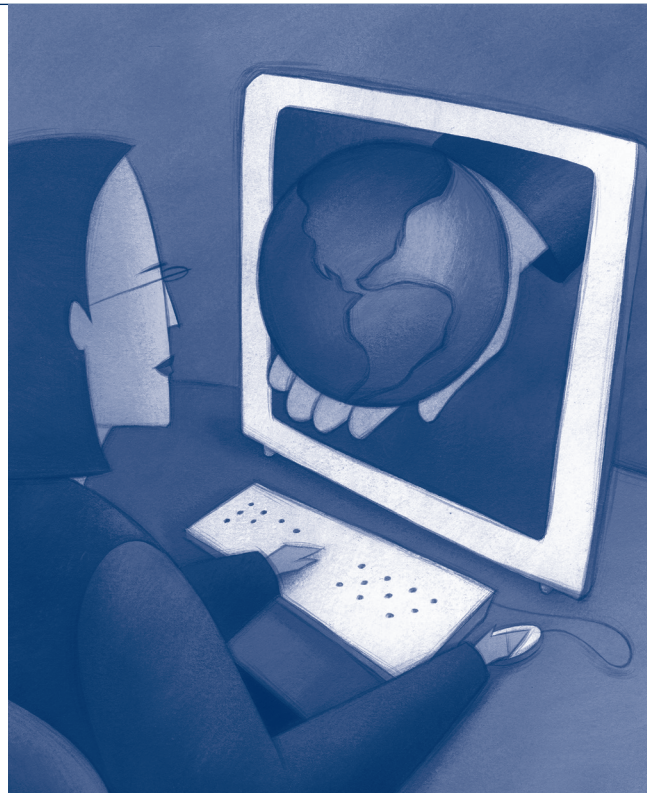
Special reduced course fee for University students, faculty and staff!

Data exploration and graphical data analysis methods stress visualization to thoroughly study the structure of data and to check the validity of statistical models to fit the data. This three-day course covers fundamental concepts for understanding and successfully applying data exploration and graphical analysis methods by using the powerful and user-friendly SAS macro-call files. Course participants will learn methods in data preparation, exploration and graphical data analysis used in exploratory factor analysis, k-mean cluster analysis, and model-building using multiple linear, logic regression, and discriminant analysis techniques. Hands-on training in user-friendly SAS applications will be conducted in the lab setting.

Students will receive a copy of the *Data Mining Using SAS Applications* book, lecture notes and access to the use of the SAS macro-applications covered in the course.

Prerequisites: No SAS experience or programming experience is required; however, participants are required to have an understanding of basic statistical methods and a working knowledge of Microsoft Windows software applications.

When:	May 19-21; Tues.-Thurs., 9 a.m.-4 p.m.
Where:	University of Nevada, Reno, Redfield Campus, 18600 Wedge Parkway, Reno
Instr.:	George Fernandez, Ph.D., director, Center for Research Design and Analysis, University of Nevada, Reno
Fee:	\$899, includes tuition, course materials and parking \$299, University of Nevada, Reno students, faculty and staff only
Sched. #:	091TECH102 (Register online at www.extendedstudies.unr.edu or by phone at (775) 784-4062 or 1-800-233-8928.)



About the Instructor

George Fernandez, Ph.D., is director of the University of Nevada, Reno Center for Research Design and Analysis. Fernandez has served as University of Nevada Cooperative Extension state specialist in resource economics since 2001, and as a professor and statistician for the University of Nevada, Reno College of Agriculture, Biotechnology and Natural Resources. He earned his doctoral degree from Texas A&M University in 1985.

In nearly 20 years as an instructor, Fernandez has taught a wide variety of courses, including Applied Multivariate Statistical Methods, Design and Analysis of Experiments, Linear and Non-Linear Regression, Introduction to SAS Programming and Introduction to Statistical Analysis. His areas of expertise include performance analysis and network optimization models, water consumption and water quality modeling, genotype x environment interaction models, statistical analysis of biological and social sciences and data mining.

Register today!

www.extendedstudies.unr.edu • (775) 784-4062 • 1-800-233-8928